

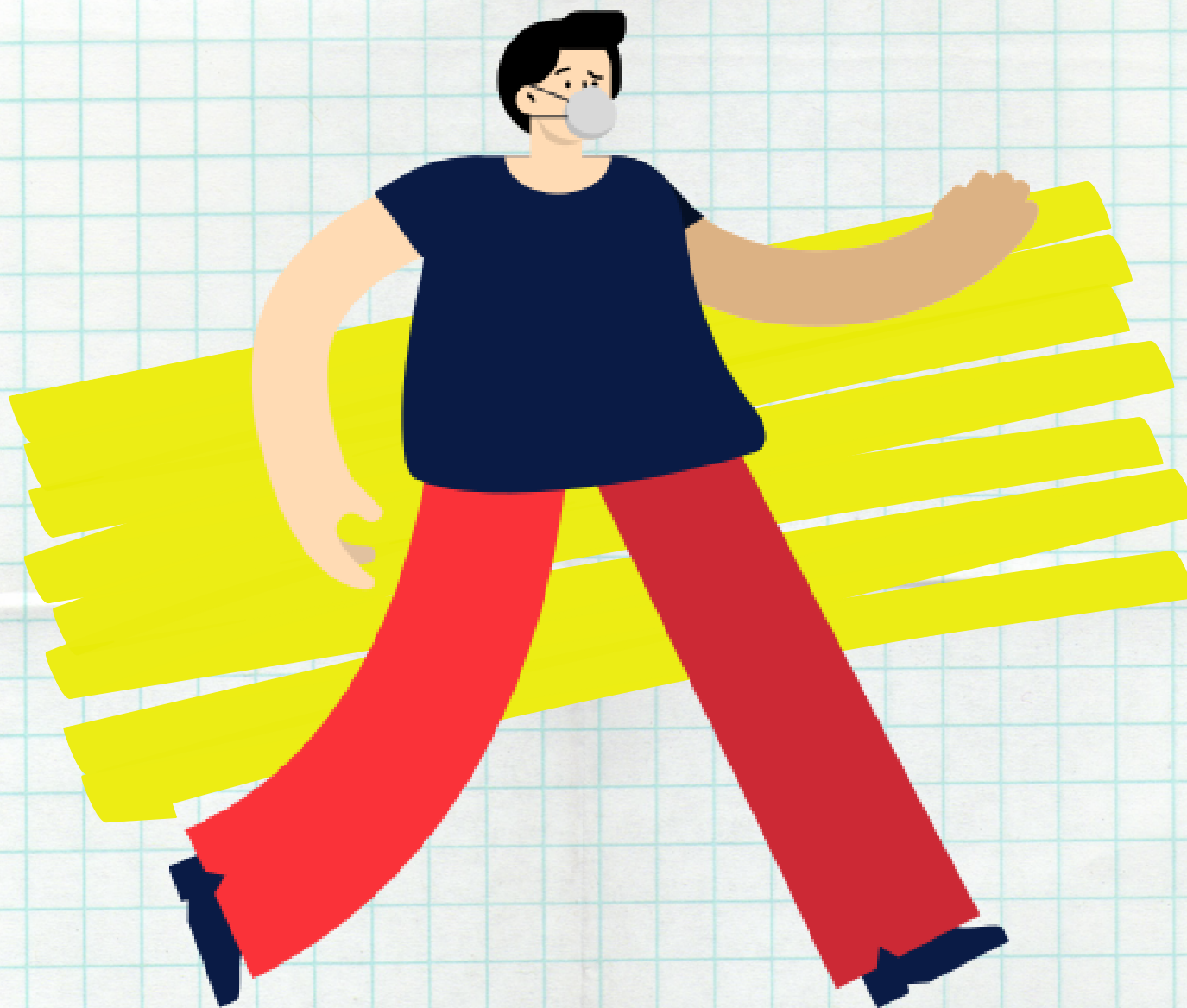
safe@work

# WHAT TO DO BEFORE GOING TO WORK





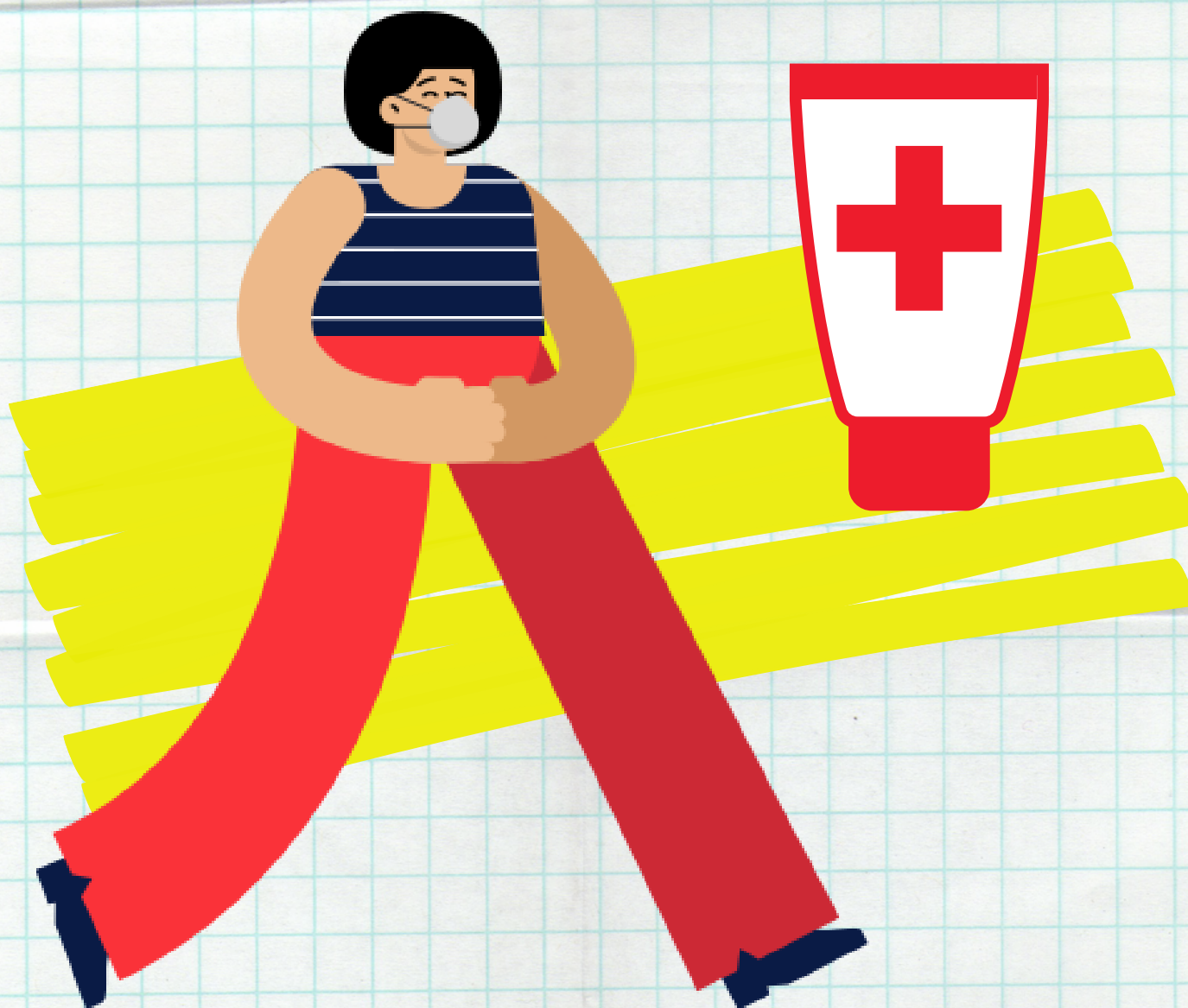
safe@work



**Wear your face mask.**



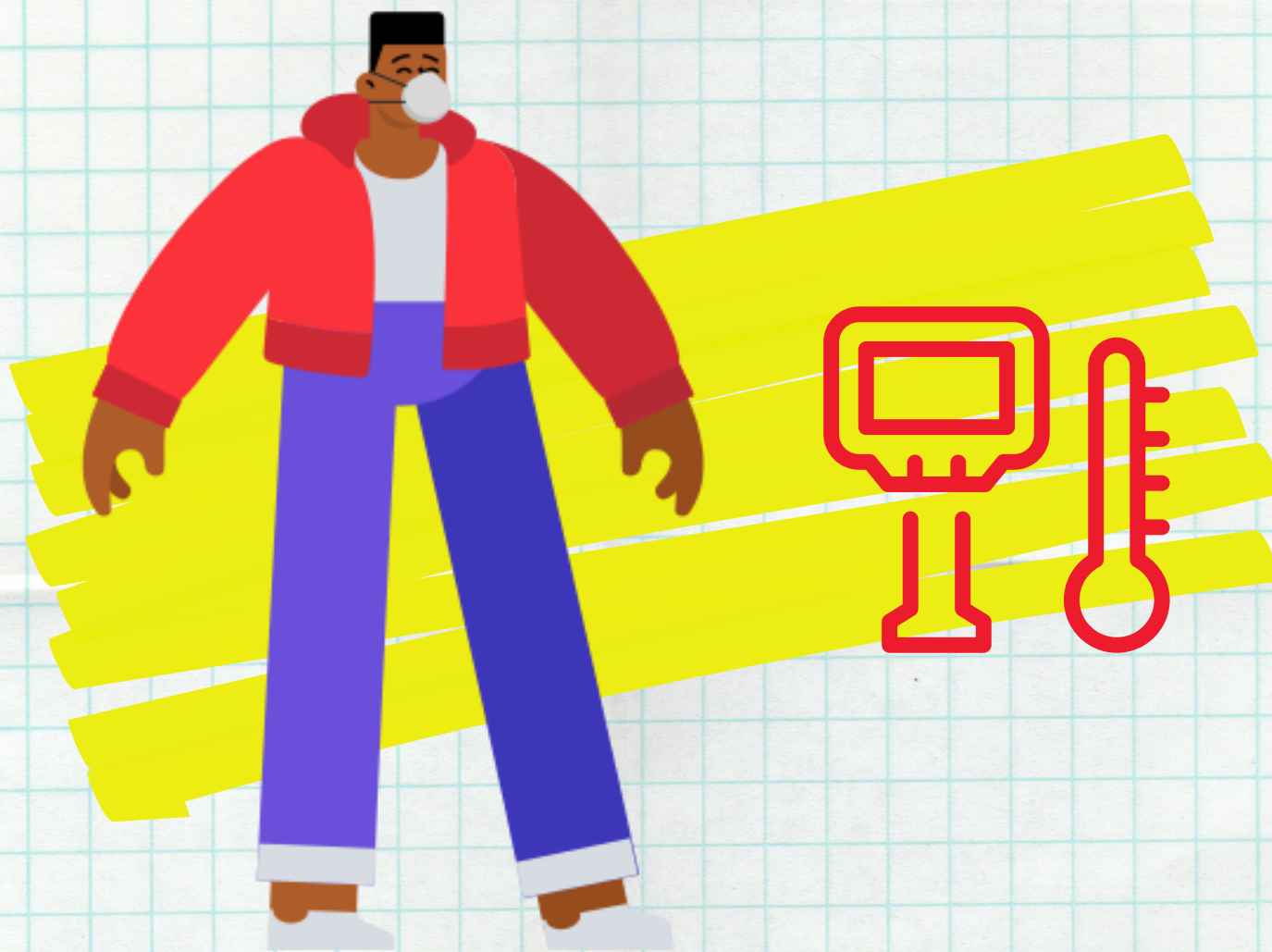
safe@work



**Bring an alcohol-based  
sanitizer.**



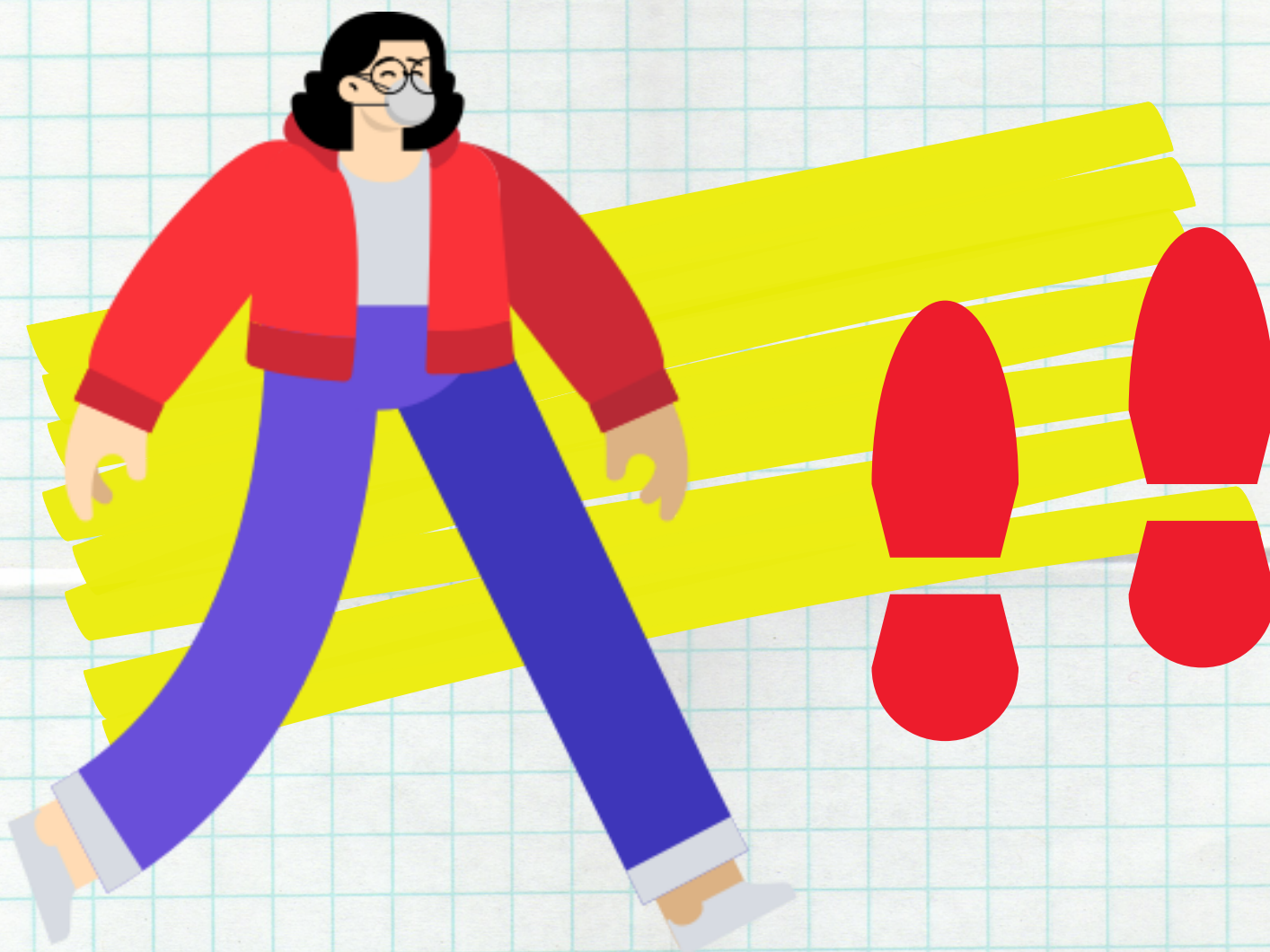
safe@work



**Allow security personnel to  
get your temperature.**



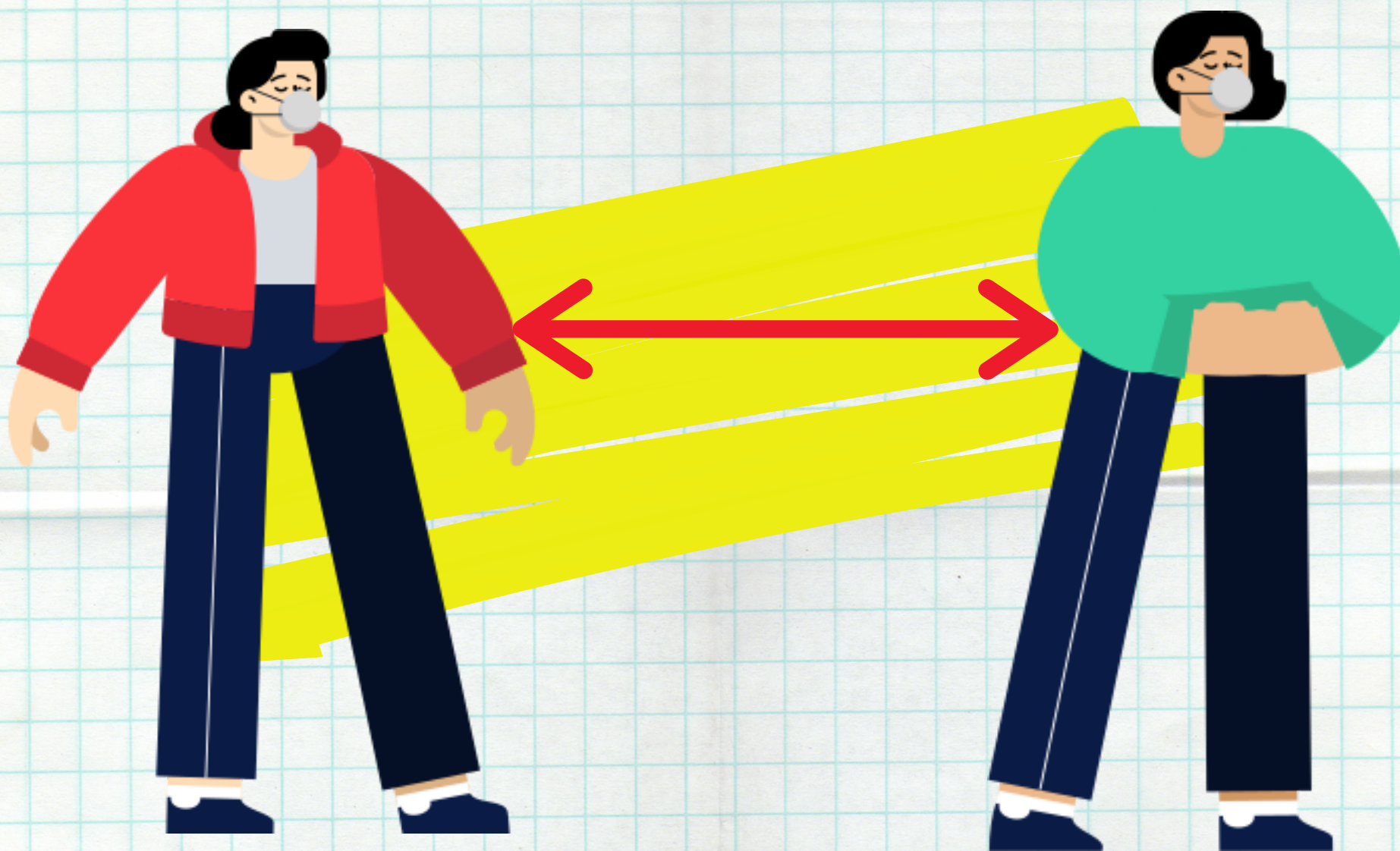
safe@work



Use the footbath.



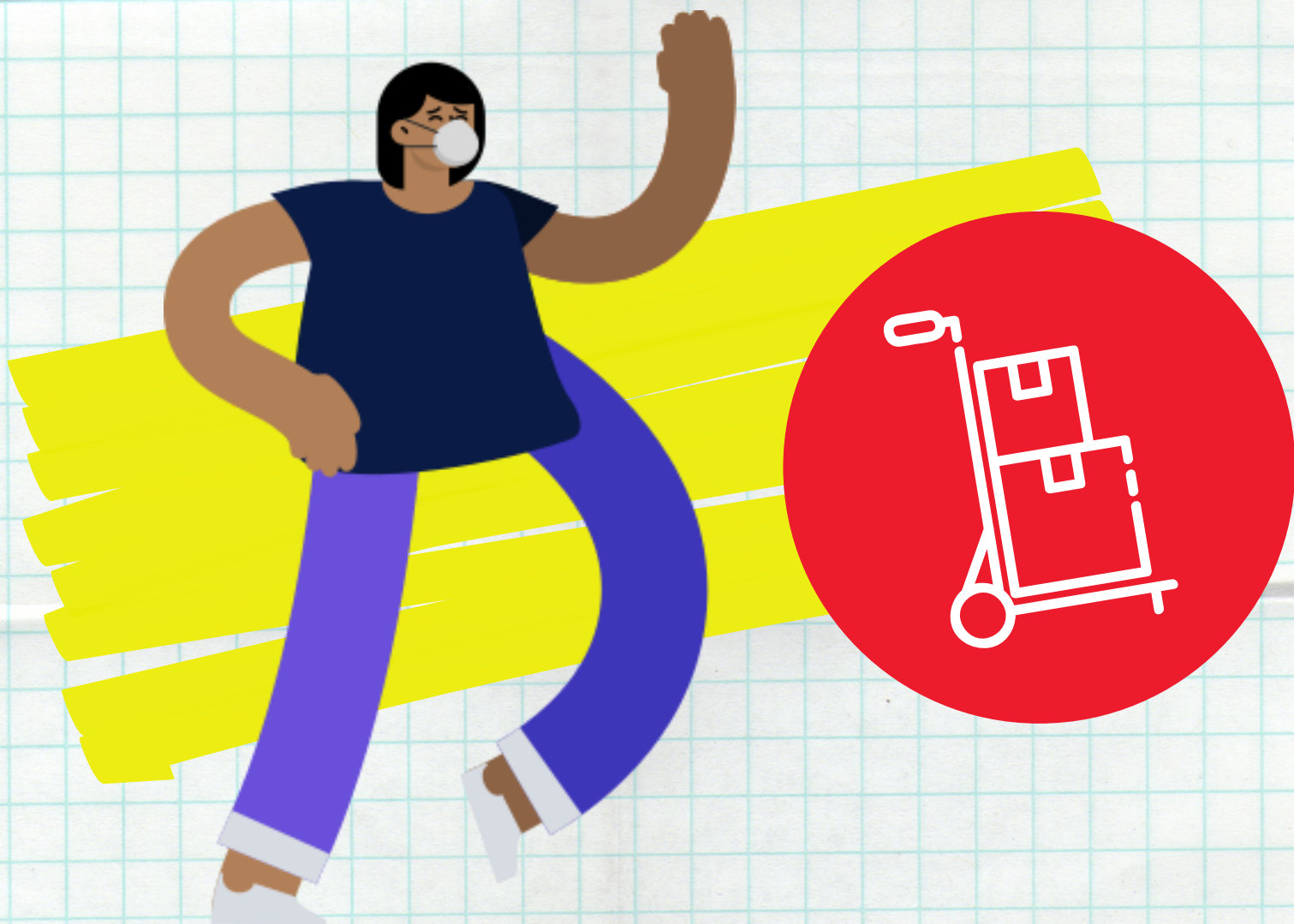
safe@work



**Keep at least one-meter  
distance from other people.**



safe@work



**Have your vehicle and  
equipment disinfected before  
entering the office.**



safe@work



If you're not feeling well, stay  
home and inform your  
supervisor.