

safe@work

# WHAT TO DO WHILE AT WORK





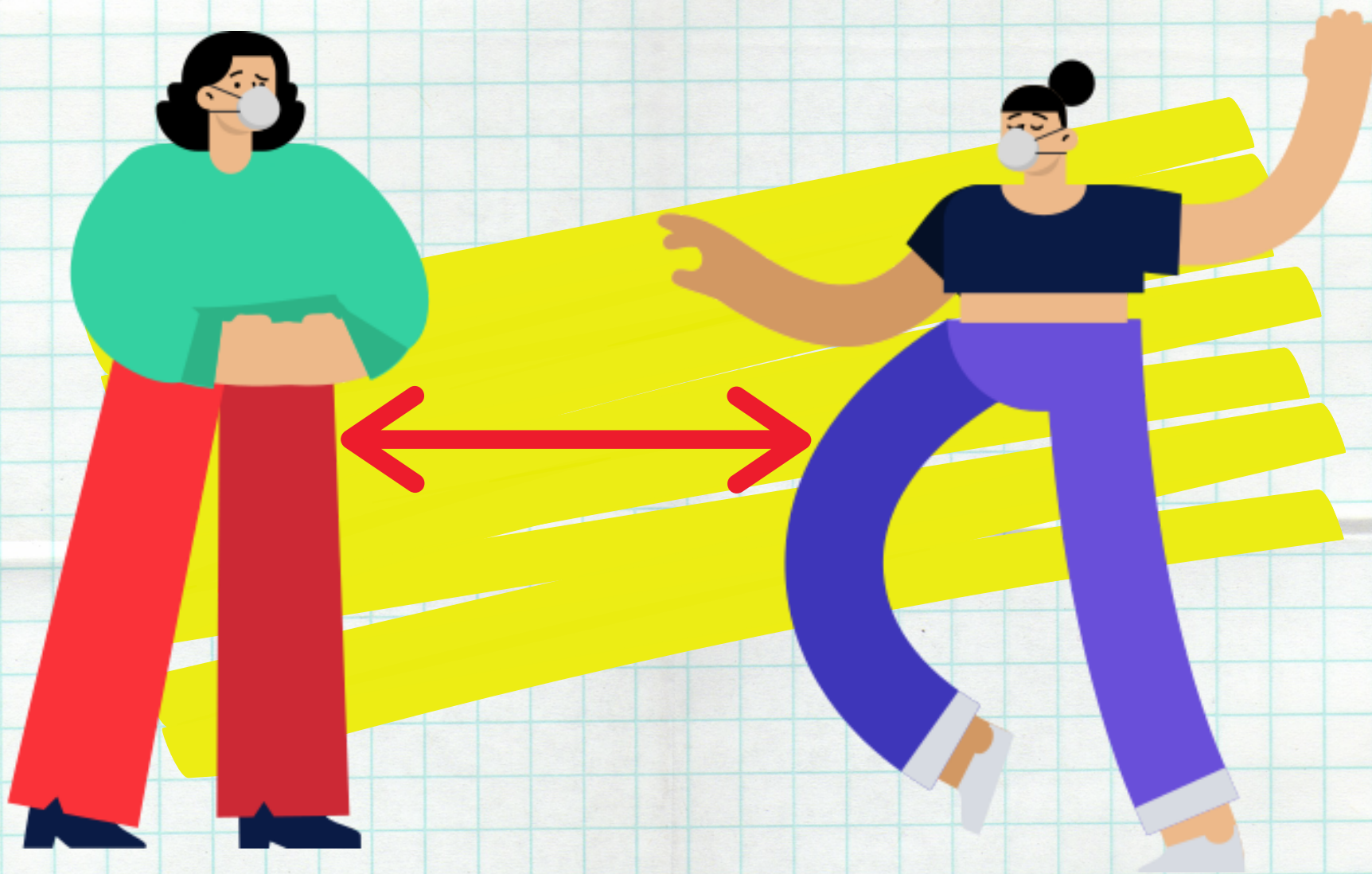
safe@work



**Keep your mask on, unless you  
have to eat or drink.**



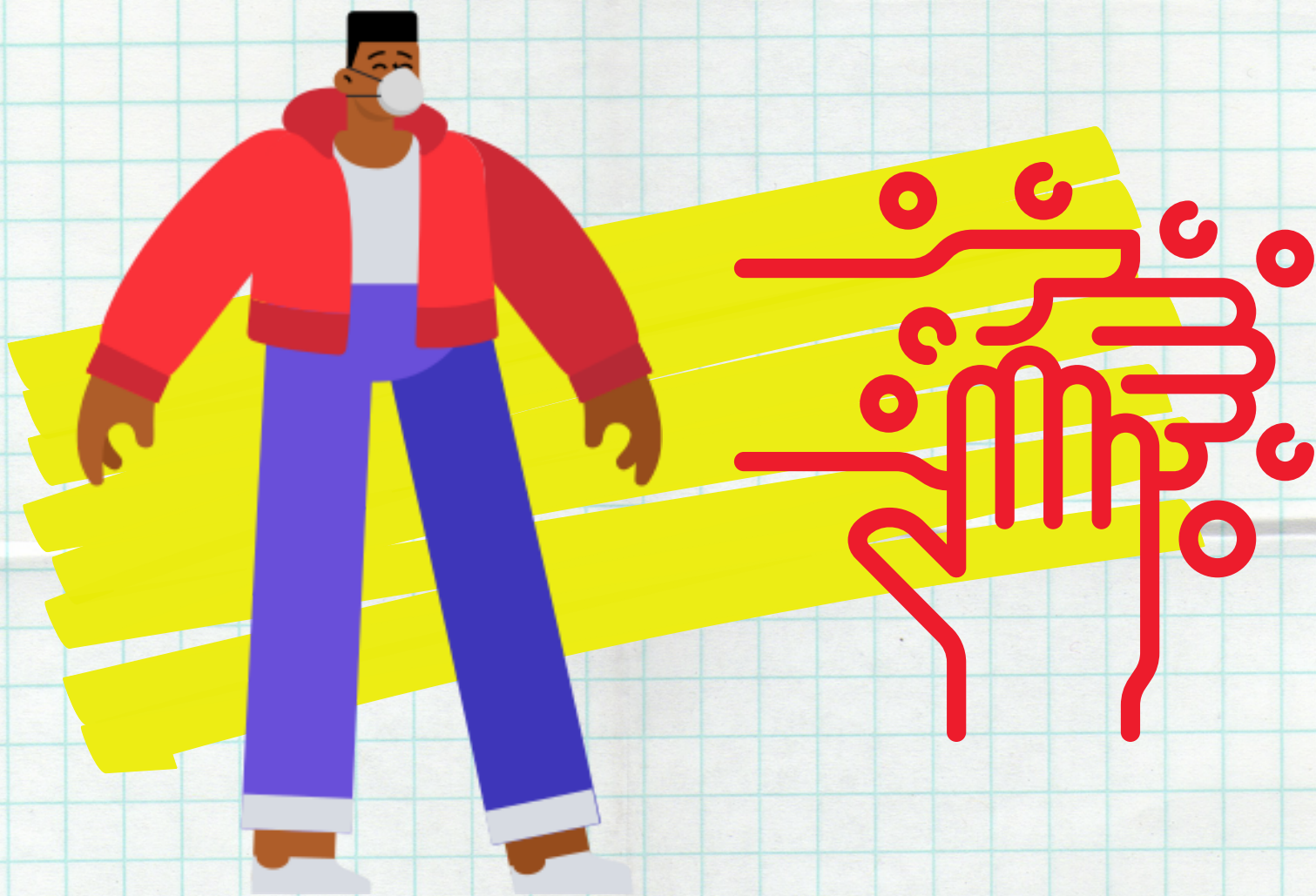
safe@work



**Keep one-meter distance  
from other people.**



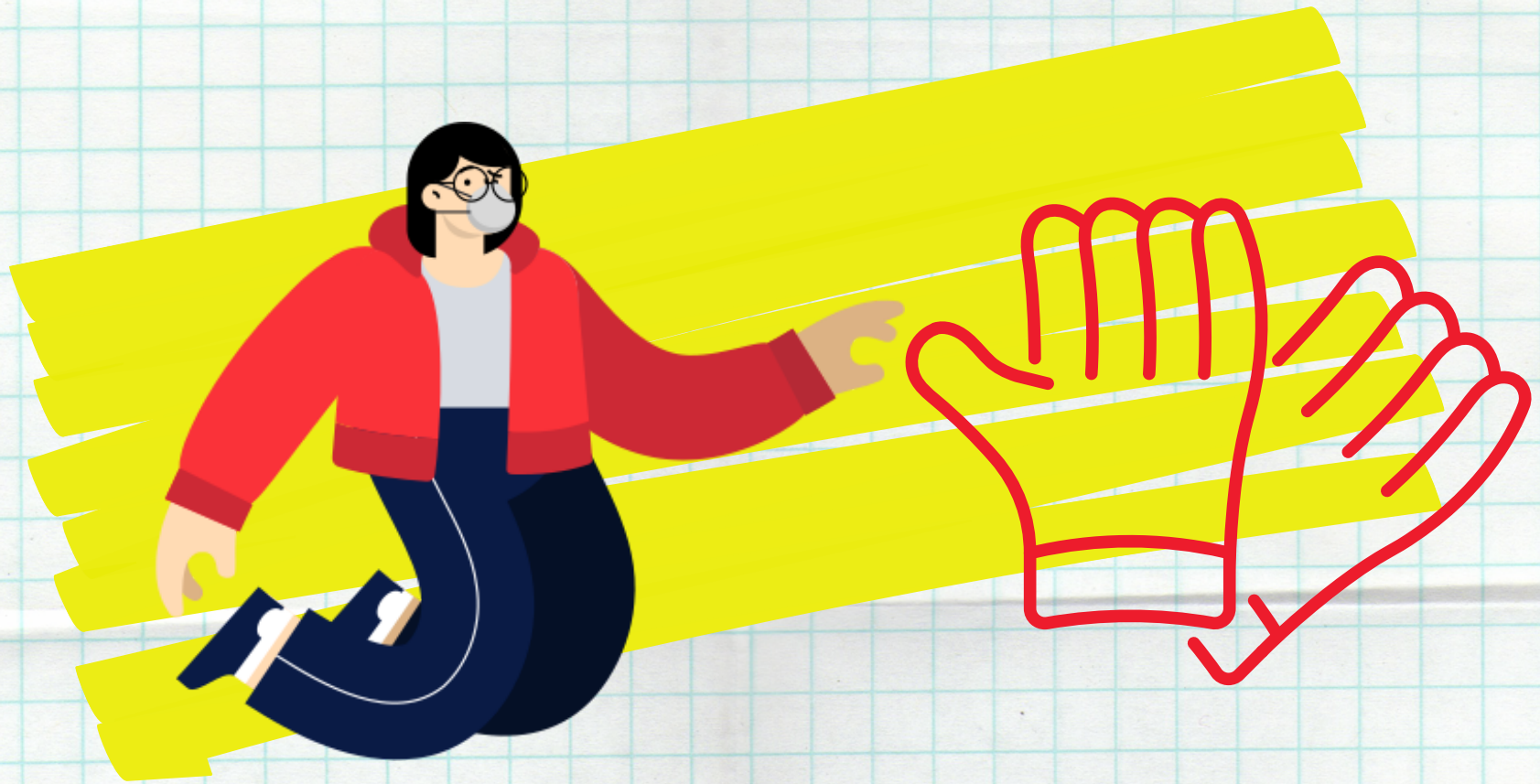
safe@work



Frequently wash your hands  
for at least 20 seconds.



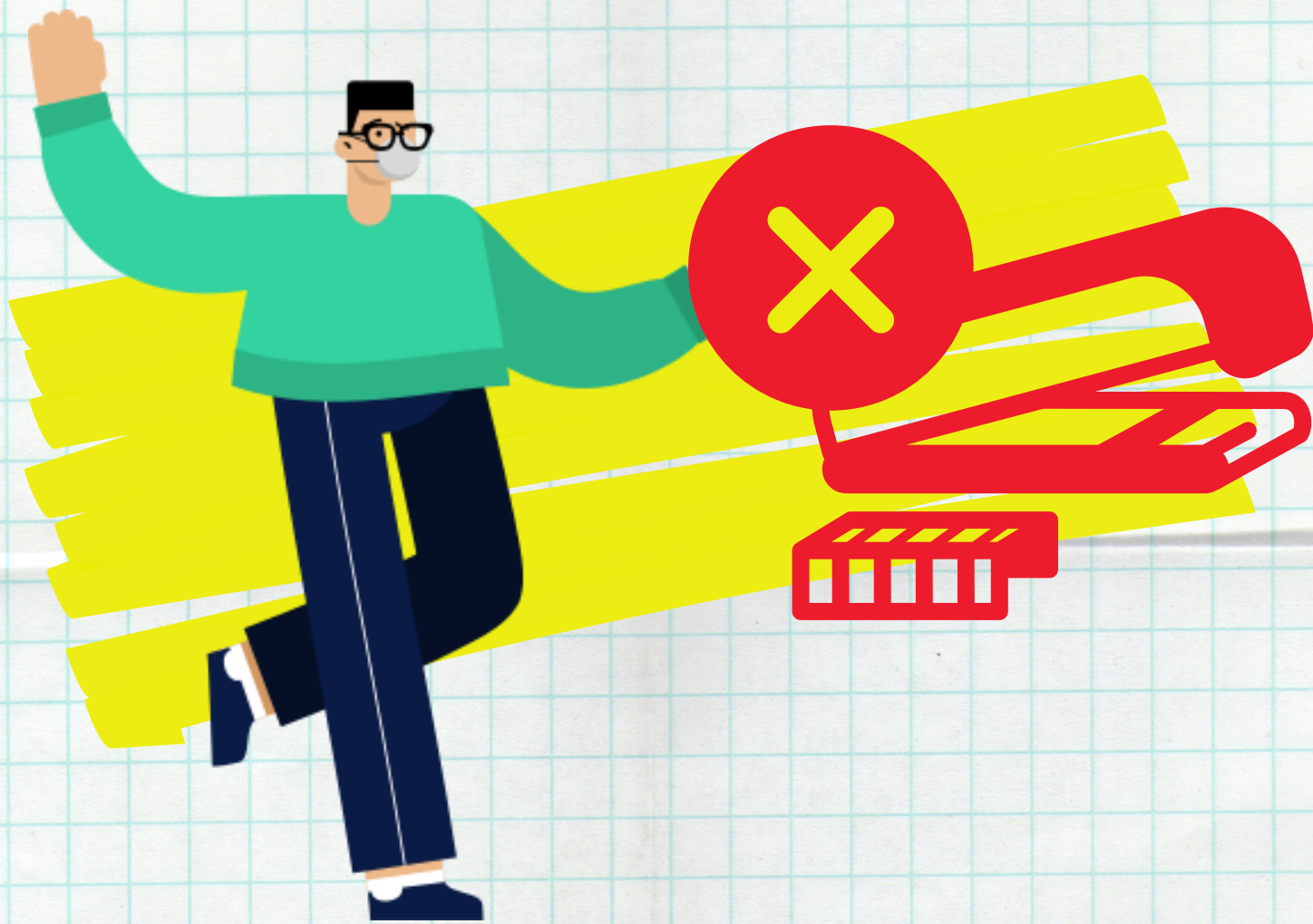
safe@work



**Wear gloves and use a washable rag to disinfect your workstation and equipment. Throw the gloves in the bin designated for infectious materials; place the rag in its assigned bin (to be washed by utility personnel).**



safe@work



**Avoid borrowing and  
lending things for now.**



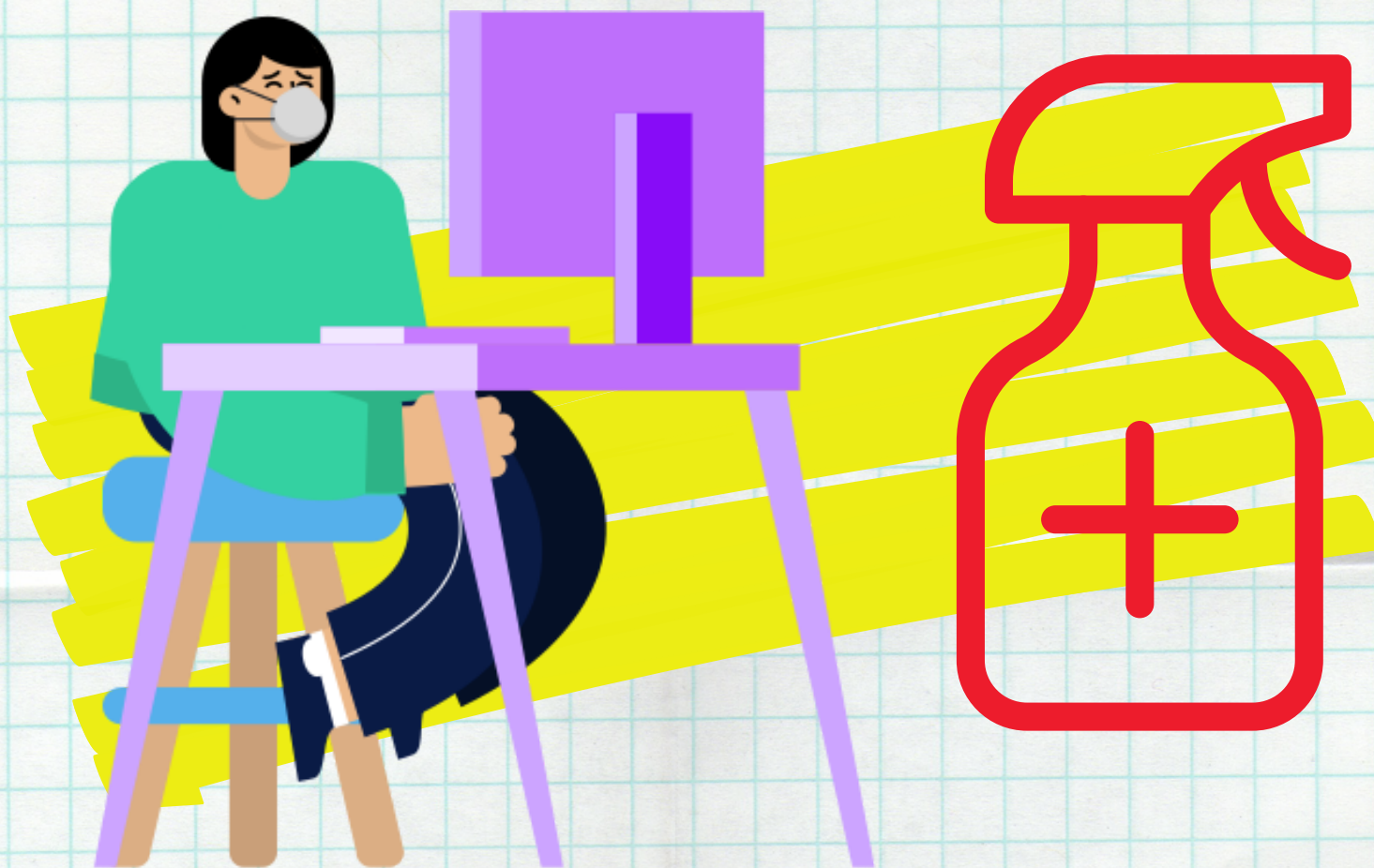
safe@work



**Whenever possible, choose  
online meetings (e.g. Zoom).**



safe@work



**Before going home,  
disinfect your hands and  
workstation again.**